

Impact
on **Urban**
Health

Urban Health Index

User guide 2025



Intro

The Urban Health Index (UHI) is a social progress index developed by Impact on Urban Health for the London boroughs of Lambeth and Southwark.

It captures data on indicators across 48 wards, helping users to understand the social and environmental factors shaping the health and wellbeing of the population living in these areas.

Who is this for?

Local residents:

Looking to understand how their ward is doing across different categories (basic human needs, foundations of wellbeing, opportunity) and how it might compare to other wards. This information can support conversations with councillors or service providers in your area to improve the conditions in your neighbourhood.

Organisations working in Lambeth and Southwark:

Looking to understand where the major areas of need are, and where to focus their work.

Funders:

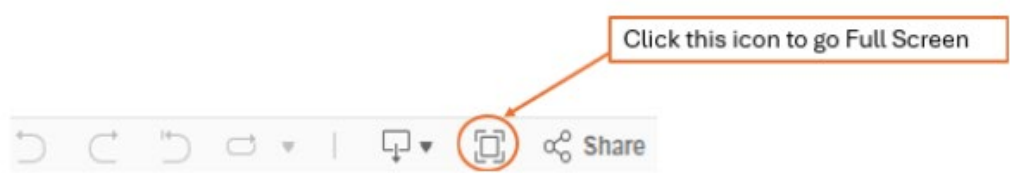
Trying to understand where initiatives might have the biggest impact, what the core issues are across wards, and how these different issues are linked. This information can support planning for funding, as well as evaluation and measurement over time.

Glossary of terms

Component	Each dimension is divided into several components that group together indicators. For example, the components within the dimension Basic Human Needs are Nutrition and Basic Medical Care, Water and Sanitation, Shelter, and Personal Safety.
Dimension	These are the three major pillars of the UHI, that group together aspects of social progress (e.g. Basic Human Needs, Foundations of Wellbeing, Opportunity).
Indicator	These are specific datasets that are used to assess an area's performance in that component. For example, the component Nutrition and Basic Medical Care includes indicators such as low birth weight rates, obesity rates and premature mortality.
Performance	The performance colours show if the score is in the top or bottom 20% (quintile). It is visualised as a circle on the tables and as colours on the map. Green means the indicator is in the top 20%, yellow is the middle 60%, and red is the bottom 20%.
Score/Value	For Dimensions (e.g. Basic Human Needs) or Components (e.g. Nutrition & Basic Medical Care) a UHI score out of 0-100 is shown, where 100 is the most desirable outcome and 0 is the least desirable. For the majority of indicators, actual values are shown (e.g. Low Birth Weight is the % rate within Lambeth and Southwark). A few indicators only show their UHI score (where they are either based on index values or use council data).
Rank	This shows how each score/value for a chosen ward compares to the other 48 wards across Lambeth and Southwark. Rank 1 is the best, 48 is the worst.

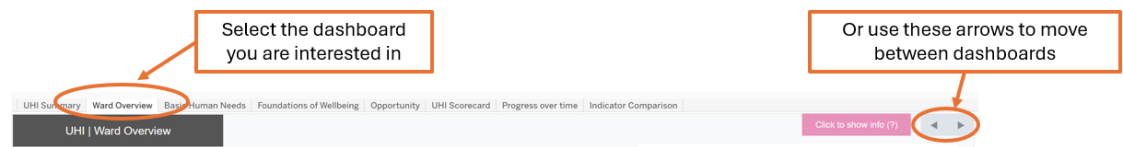
How to navigate the Index

The index is best viewed in full screen mode, and this can be done by looking at the bottom right of the dashboard where there is a bar with a full screen icon that can be selected:



To exit full screen, press the ‘Esc’ key on your keyboard.

At the top of the page there are 8 tabs, each tab opens a dashboard that shows a different view of the data. Simply select the dashboard you are interested in or use the arrows in the top right corner to navigate between the tabs.



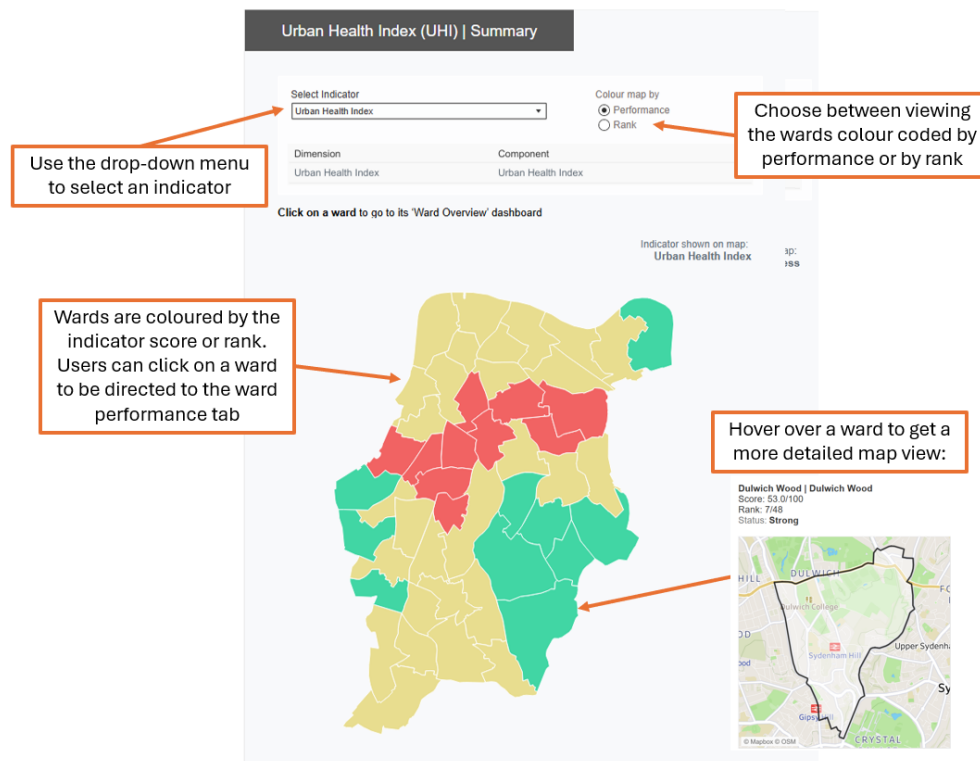
Dashboards

UHI Summary	4
UHI Ward overview	5
UHI Basic Human Needs, Foundations of Wellbeing and Opportunity.....	6
UHI Scorecard	7
UHI Progress over time	7
UHI Indicator comparison.....	8

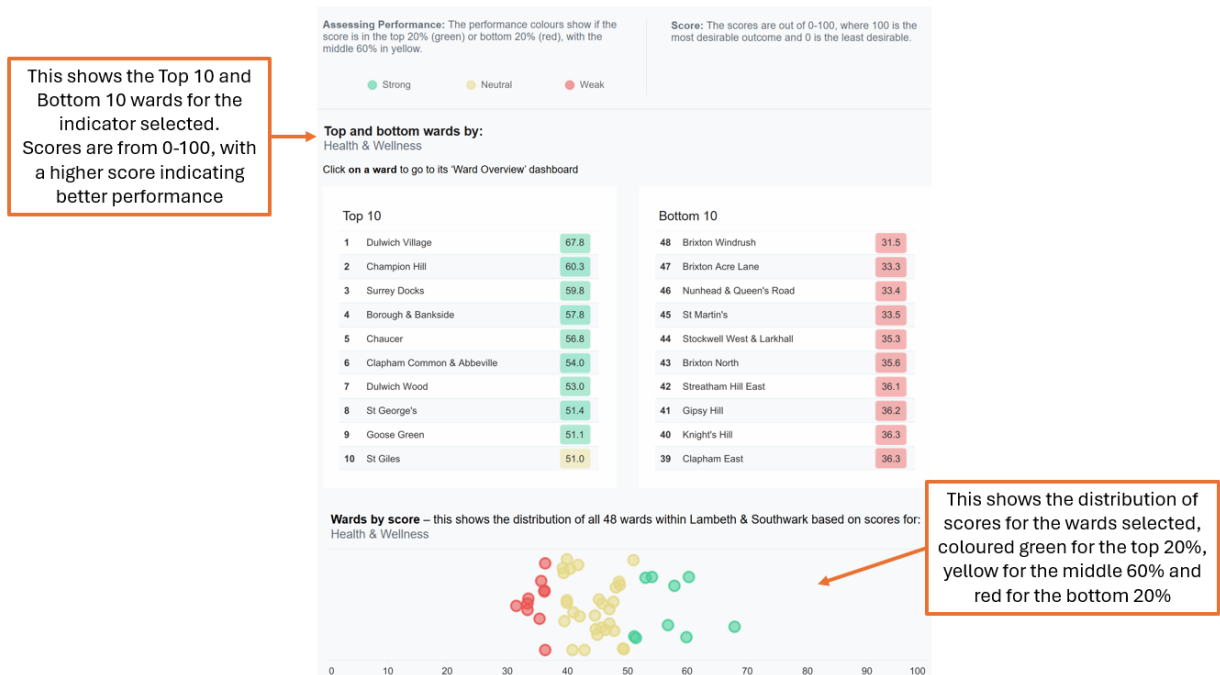
UHI | Summary

The first tab is the summary dashboard. This gives a visual overview of the UHI results.

On the left, there is a map that shows how the wards are scored/ranked for a specific indicator across Lambeth and Southwark. Users can use the drop-down menu to select an indicator and toggle between the score or the rank view.

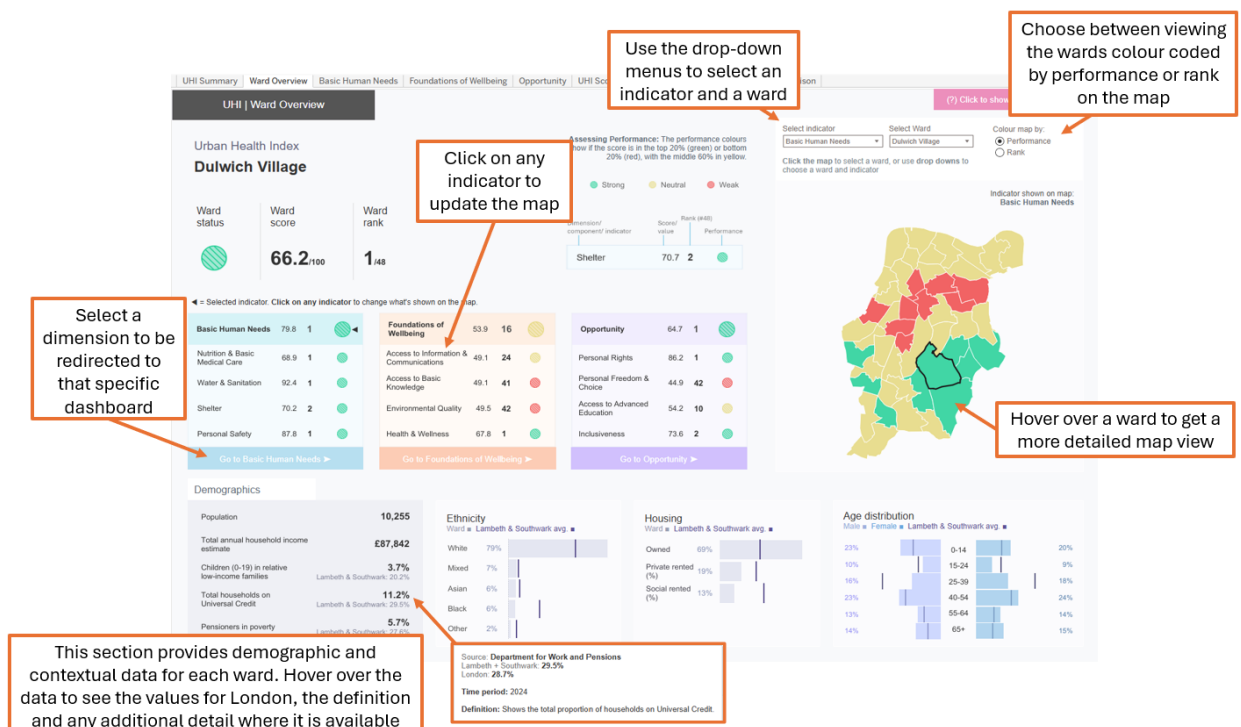


On the right side, users can see the top 10 and bottom 10 wards for this indicator, and the distribution of the wards:

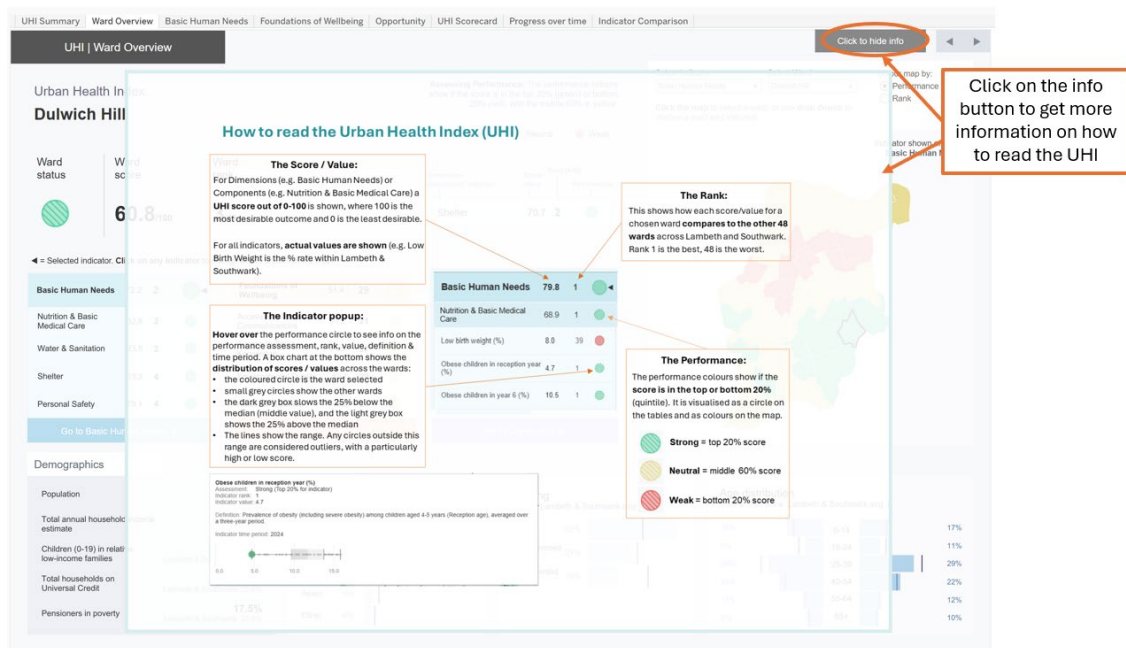


UHI | Ward overview

This dashboard allows you to select a ward and get an overview of how this ward performs against the main components. Along the bottom of the dashboard there is additional demographic and contextual information.

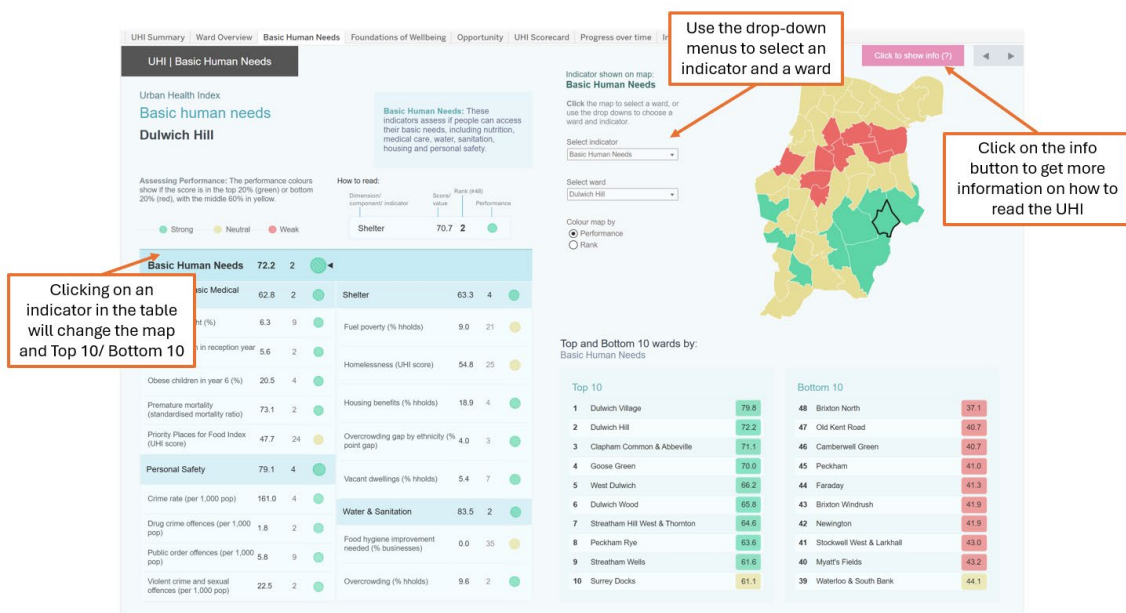


To get more information on how to read the UHI results, select the 'Click to see info' button in the top right corner. Click the button again to unshow the info.



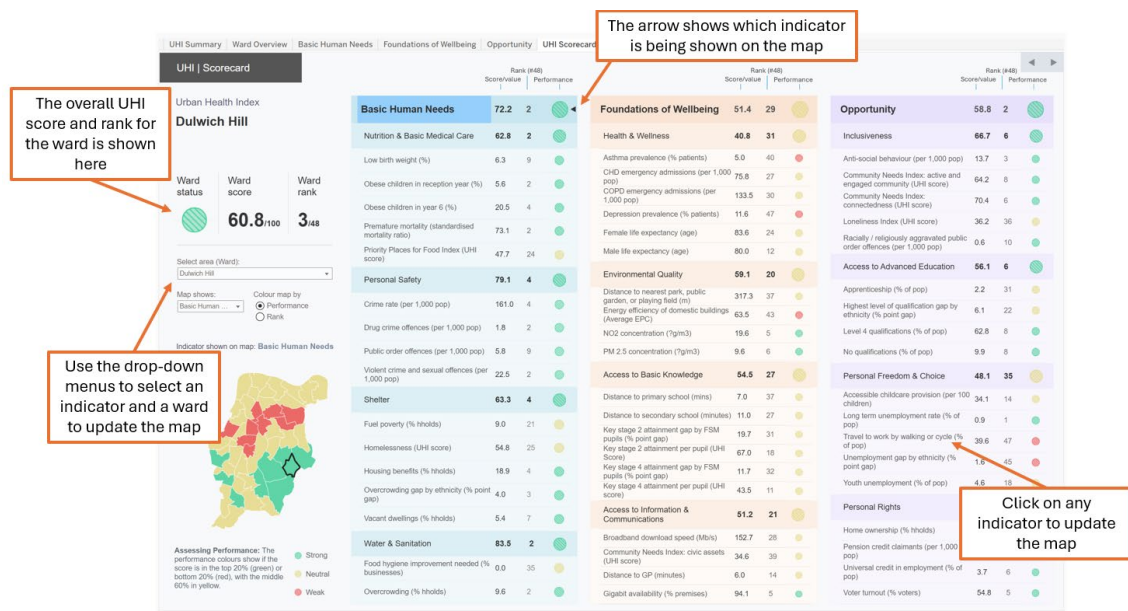
UHI | Basic Human Needs, Foundations of Wellbeing and Opportunity

These three dashboards all show the same visuals for each of the dimensions – basic human needs, foundations of wellbeing and opportunity. These dashboards allow users to focus on a specific dimension and see more detail on the components and indicators within the chosen dimension.



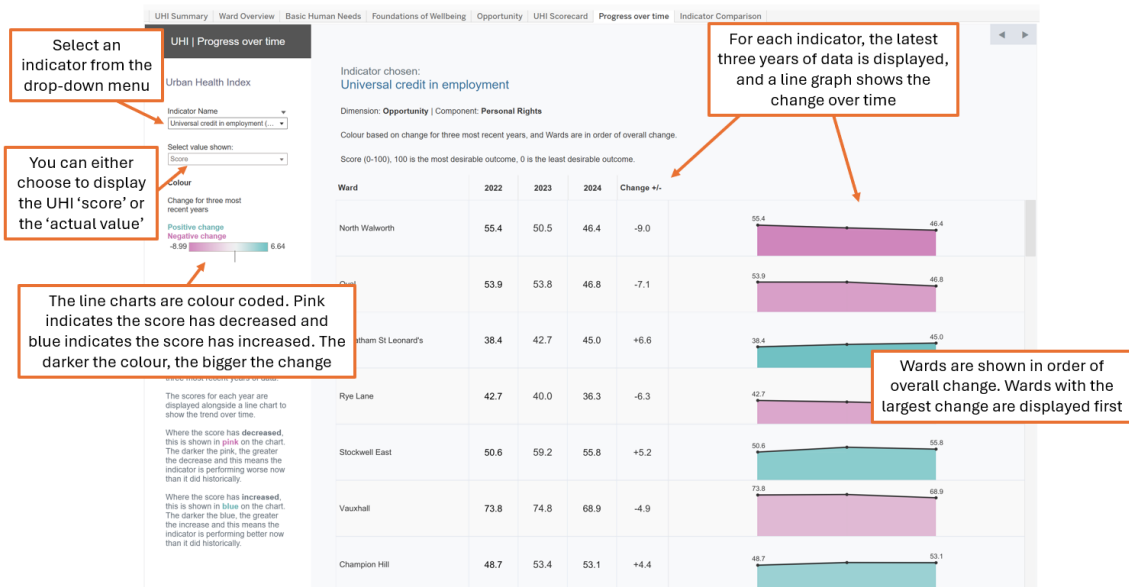
UHI | Scorecard

This dashboard shows all the indicators and components across all three dimensions for the ward selected. The scorecard allows users to see which indicators are relative strengths or areas for improvement within the selected ward.



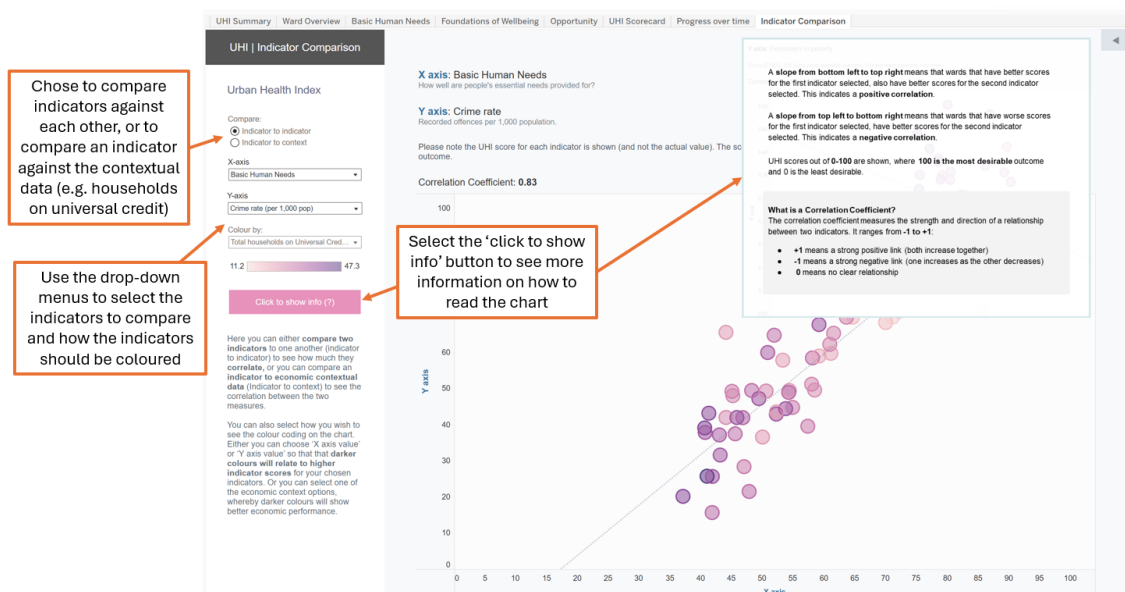
UHI | Progress over time

This dashboard allows users to see how indicators have changed over time for the last three years of available data. 23 indicators have historical data and are included, enabling users to track trends and assess whether conditions are improving or worsening over time.



UHI | Indicator comparison

This dashboard allows users to explore how strongly two indicators, components, or dimensions correlate—that is, how they change together. This dashboard also enables users to view how strongly contextual data such as annual household income or total households on universal credit, correlates with the UHI indicators, components or dimensions. The correlation coefficient shows the strength of the relationship between visualised indicators, where values closer to 1 and -1 show a stronger correlation, whereas values closer to 0 show that there's no strong correlation. The strength of the correlation does not imply a causal relationship between them.



Impact on **Urban** Health



urbanhealth.org.uk
[@ImpUrbanHealth](https://twitter.com/ImpUrbanHealth)