

The State of Urban Health: Dashboards User Guide

The State of Urban Health is research from **Impact on Urban Health** that looks at urban health challenges, the drivers of inequities in urban health and how this has been changing over time.

As part of this research, Impact on Urban Health have produced three core dashboards displaying the data used in the report. This user guide is designed to help you to navigate each of these dashboards.

Dashboards ([and links \[↗\]](#))

- Demographics in Major Urban Areas: [Demographic patterns across major urban areas in England \[↗\]](#)
- Outcomes in Major Urban Areas: [Exploring outcomes across major urban areas in England \[↗\]](#)
- Urban & Rural Differences: [Exploring Outcome Disparities Between Urban and Rural Areas in England \[↗\]](#)

Plus, five additional dashboards exploring selected topics in more detail:

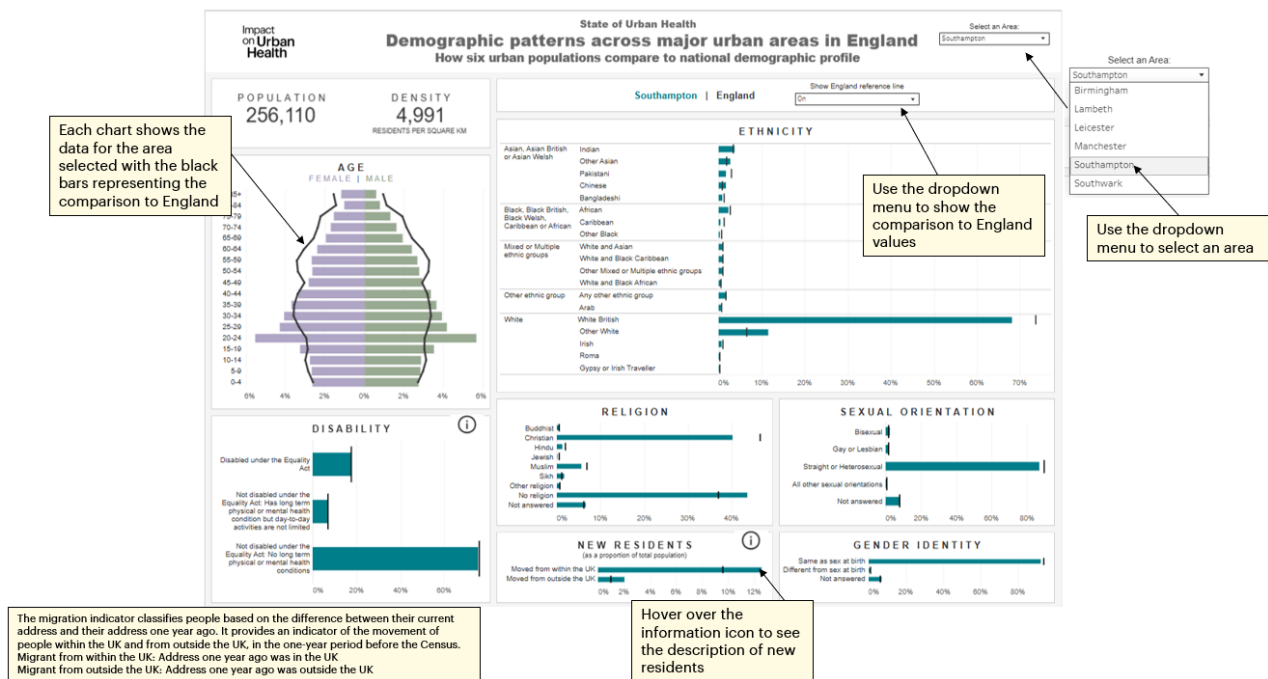
- Avoidable Mortality: [Avoidable mortality in England \[↗\]](#)
- Child Mortality: [Child mortality in England \[↗\]](#)
- Housing Conditions: [Housing conditions in England: Damp & mould and Decent homes \[↗\]](#)
- Homelessness: [Homelessness in England and major urban areas \[↗\]](#)
- Temporary Accommodation: [Temporary accommodation in England and major urban areas \[↗\]](#)

Navigating this user guide

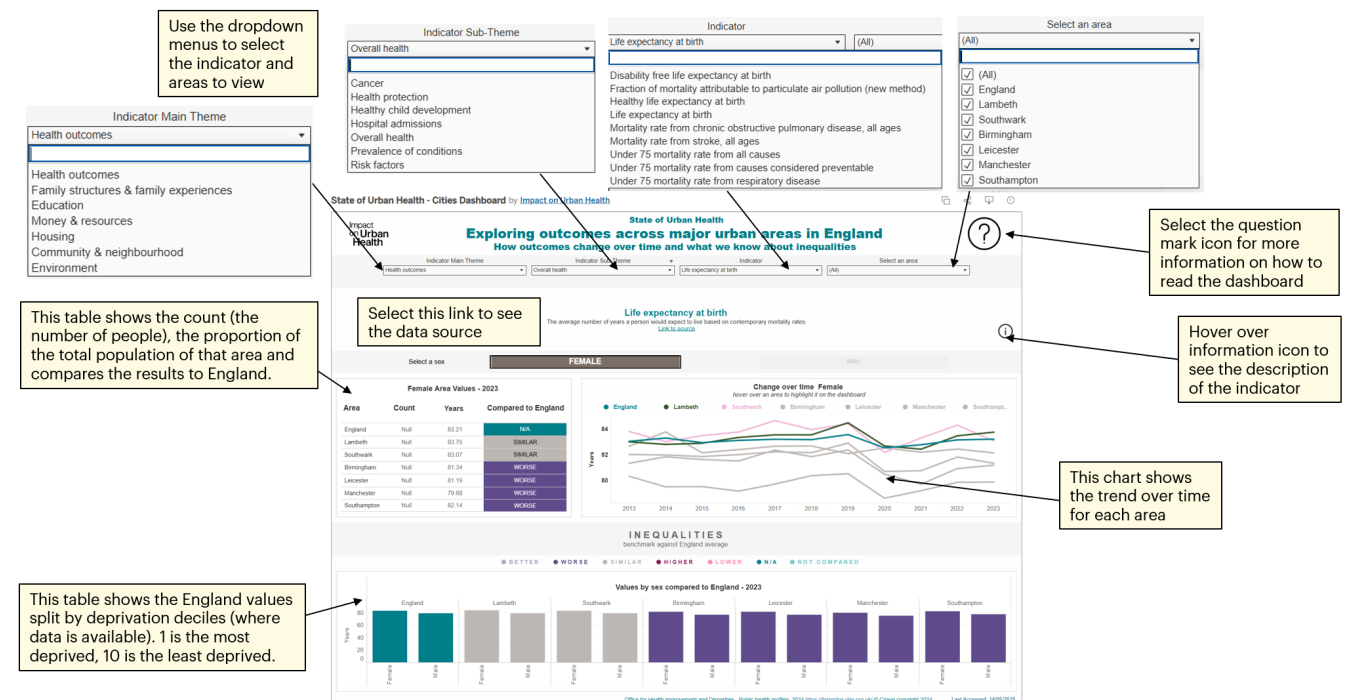
Demographic patterns across major urban areas in England [↗]	2
Exploring outcomes across major urban areas in England [↗]	2
Exploring Outcome Disparities Between Urban and Rural Areas in England [↗]	3
Avoidable mortality in England [↗]	5
Child mortality in England [↗]	7
Housing conditions in England: Damp & mould and Decent homes [↗]	9
Homelessness in England and major urban areas [↗]	12
Temporary accommodation in England and major urban areas [↗]	14

Demographic patterns across major urban areas in England [↗]

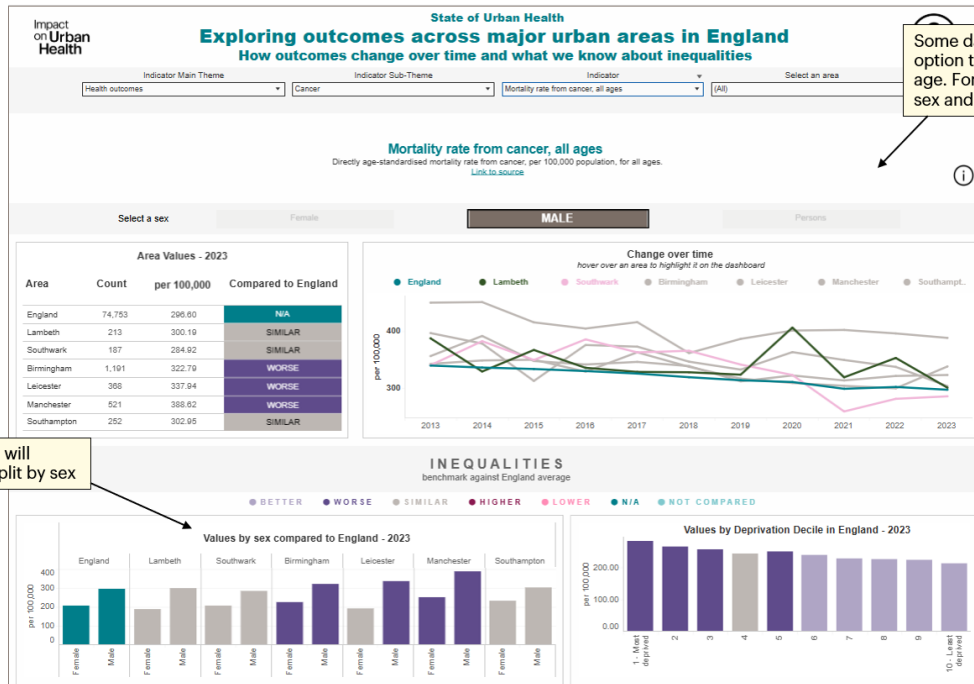
This dashboard displays the demographic split of the populations used in the State of Urban Health analysis. It allows users to see details of the populations of Birmingham, Lambeth, Leicester, Manchester, Southampton and Southwark, and compare these to the average for England. The demographic splits included are age, disability, ethnicity, religion, sexual orientation, new residents and gender identity.



Exploring outcomes across major urban areas in England [↗]

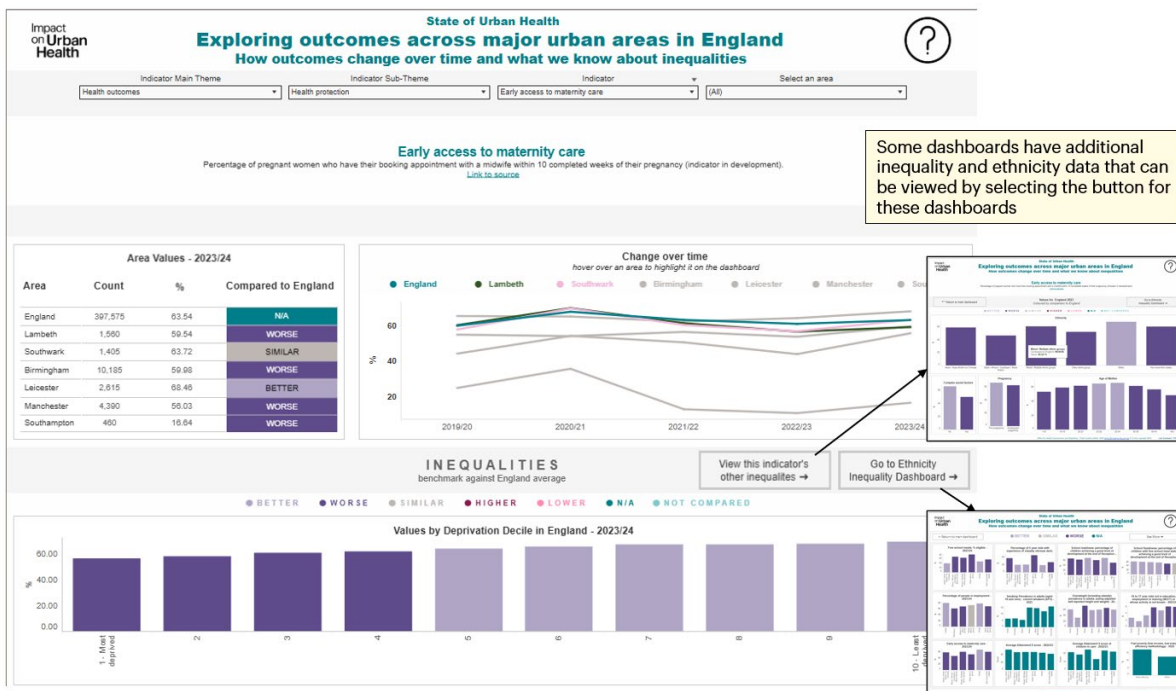


Impact on Urban Health



Some dashboards will have the option to split the data by sex or age. For this dashboard to work, a sex and age must be selected

Some dashboards will include the data split by sex



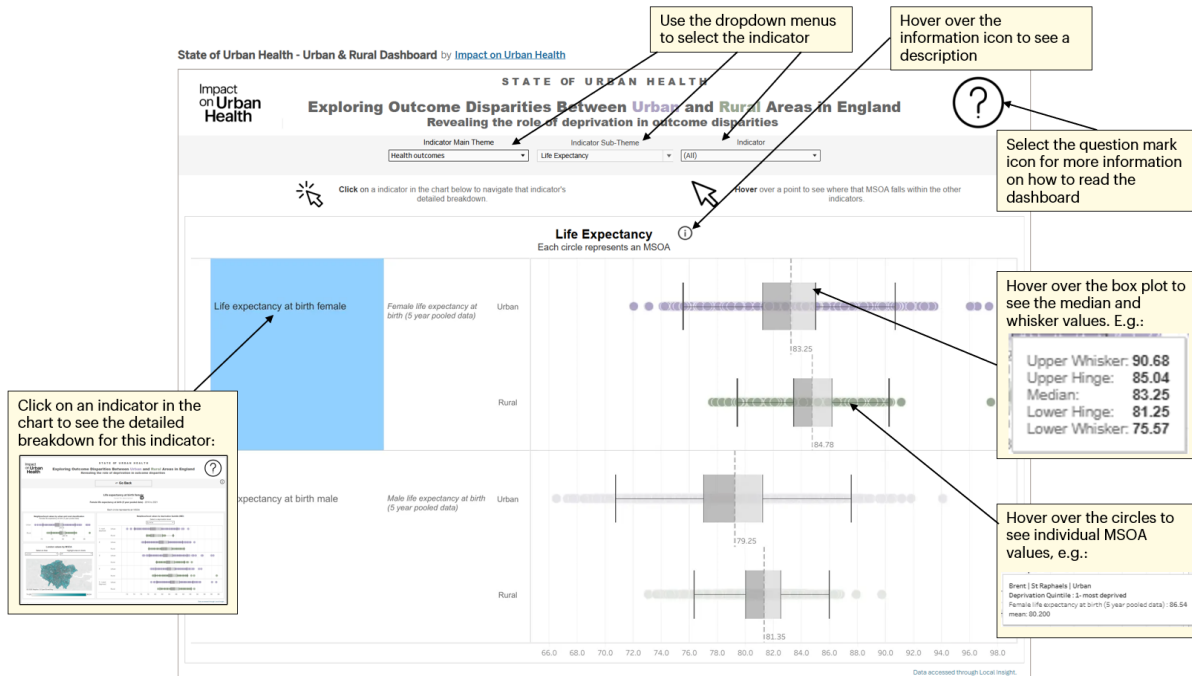
Some dashboards have additional inequality and ethnicity data that can be viewed by selecting the button for these dashboards

Exploring Outcome Disparities Between Urban and Rural Areas in England

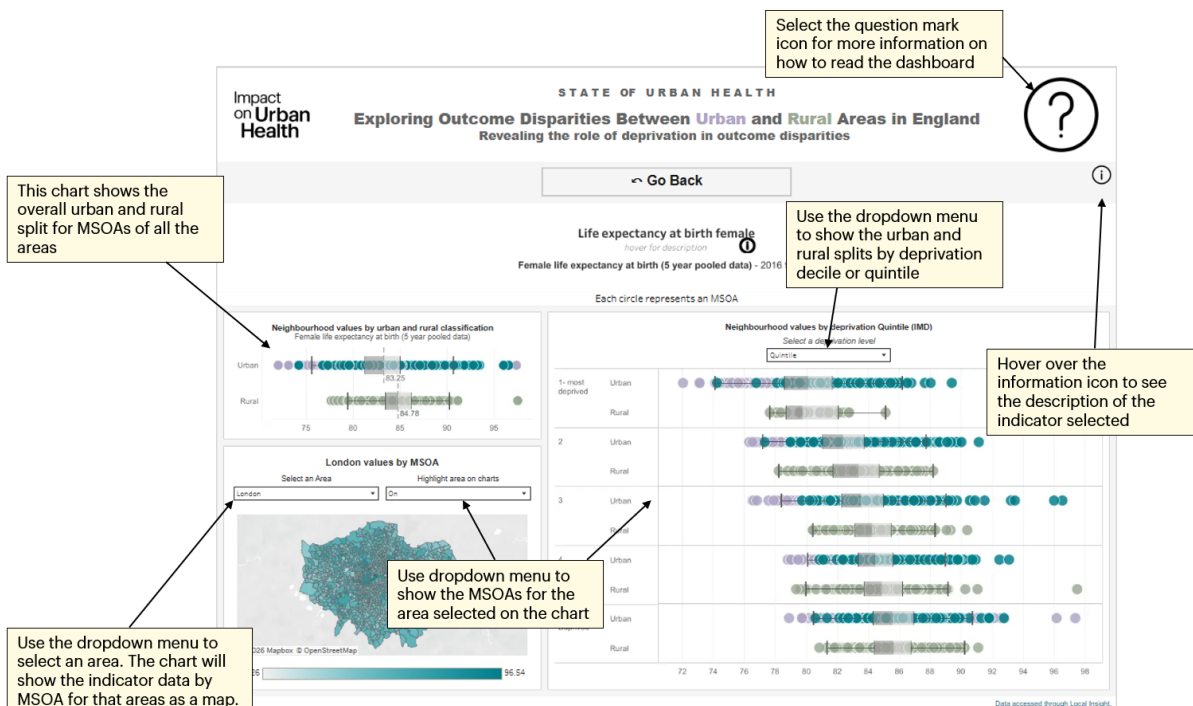
This dashboard shows the data for each MSOA (a geographical area of between 2,000-6,000 households) in Birmingham, Lambeth, Leicester, Manchester, Southampton and Southwark, split between rural and urban areas. The data is displayed as a box plot, so that users can see the distribution, median, and outliers in the data.

For more information, users can select an indicator and see the data displayed on a map and split by deprivation bands.

Urban and rural areas are defined according to the ONS Rural Urban Classification, which categorises geographies based on their residential address density and population.



- Click on an indicator to get a detailed dashboard view, breaking the data down by deprivation level.



Avoidable mortality in England [\[↗\]](#)

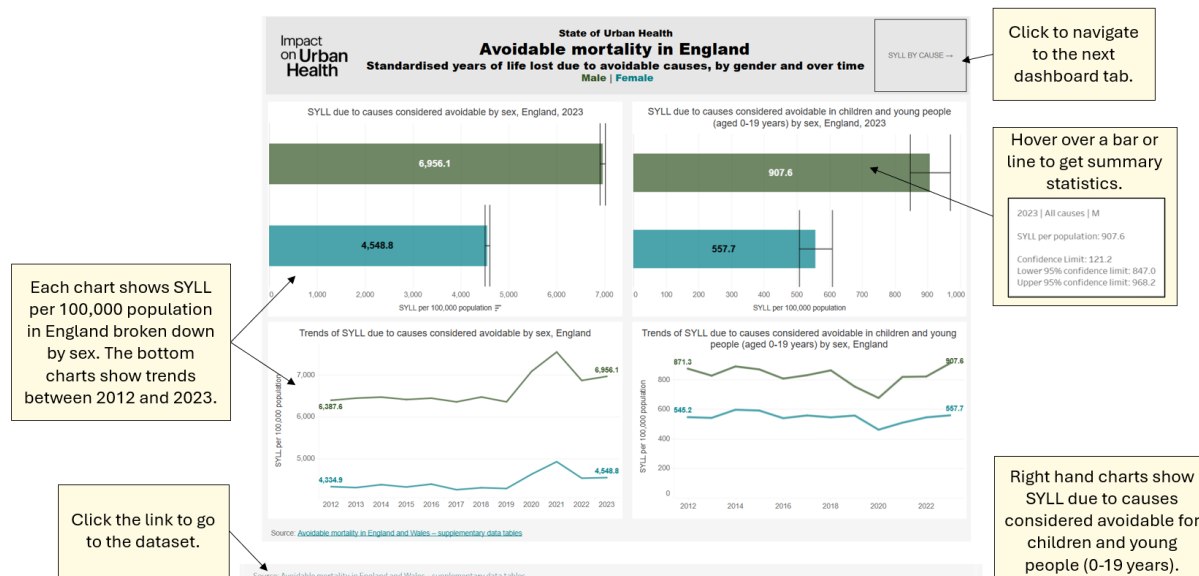
This dashboard displays data for standardised years of life lost (SYLL) due to causes considered avoidable, plus avoidable, treatable and preventable mortality rates for England. Data is broken down by cause, age and sex and show changes over time from 2012 to 2023.

Avoidable mortality refers to deaths that are preventable or treatable. In this case, it is the sum of treatable and preventable.

Preventable mortality refers to causes of death that can be mainly avoided through effective public health and primary prevention interventions (that is, before the onset of diseases or injuries, to reduce incidence).

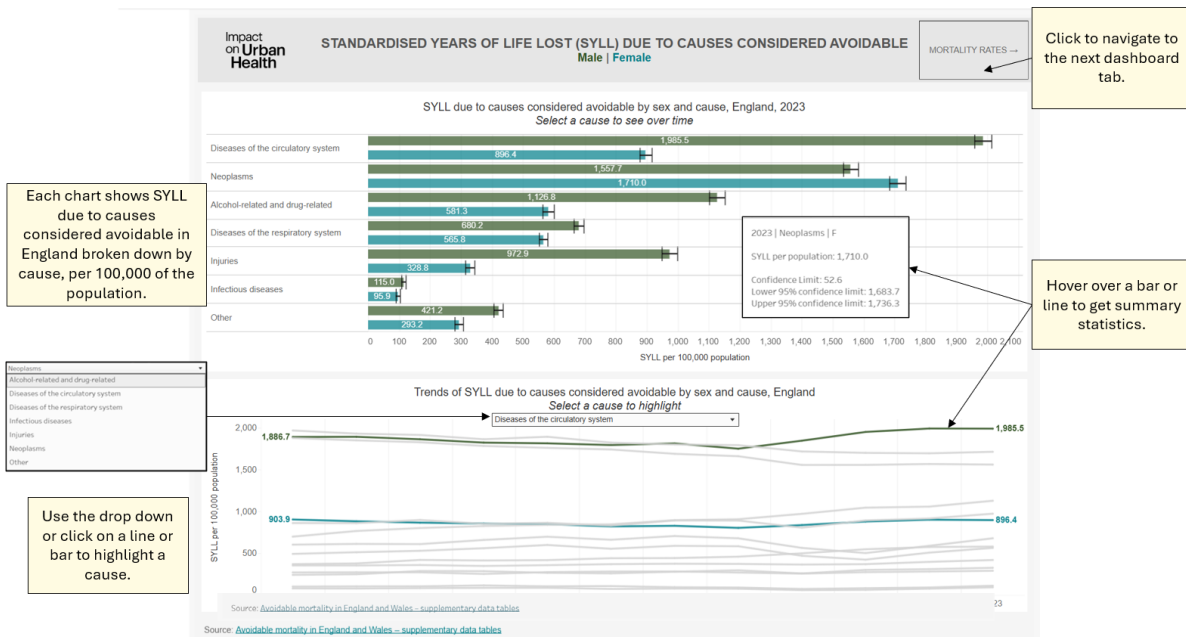
Treatable mortality refers to causes of death that can be mainly avoided through timely and effective healthcare interventions, including secondary prevention and treatment (that is, after the onset of disease, to reduce case-fatality).

Standardised years of life lost (SYLL) due to causes considered avoidable



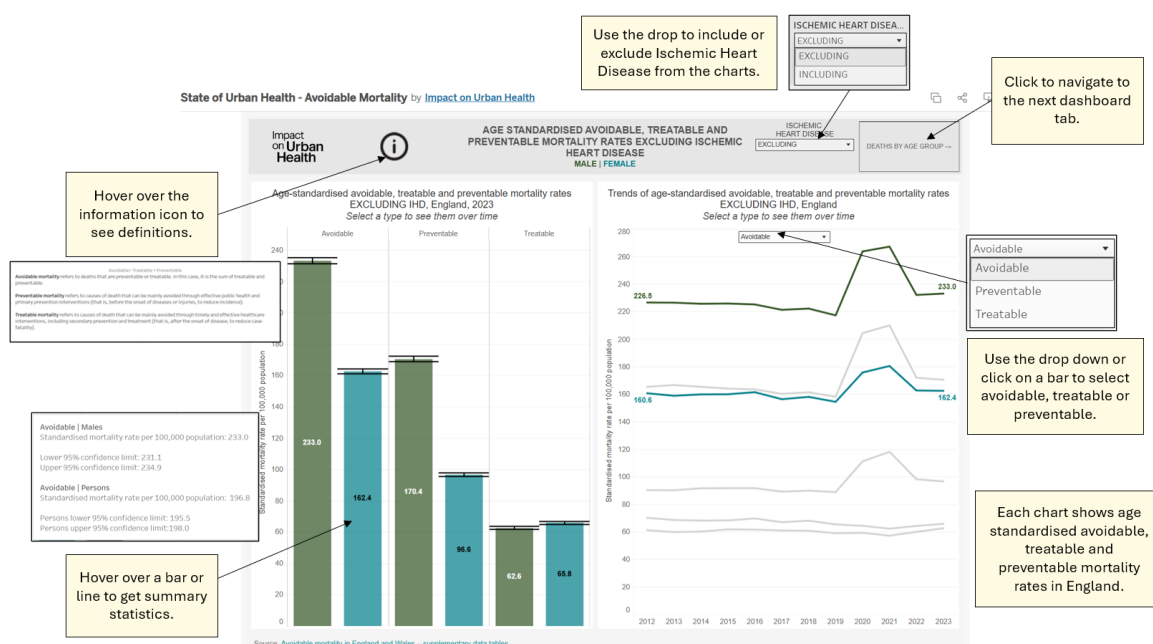
- This dashboard view displays data on SYLL due to causes considered avoidable in England, broken down by **sex**.
- The top bar charts show data for 2023, the bottom-line charts show changes in SYLL between 2012 and 2023.
- The right-hand charts shows data for children and young people aged 0-19 years.
- Hover over a bar or line to see summary statistics.

Standardised years of life lost (SYLL) due to causes considered avoidable by cause



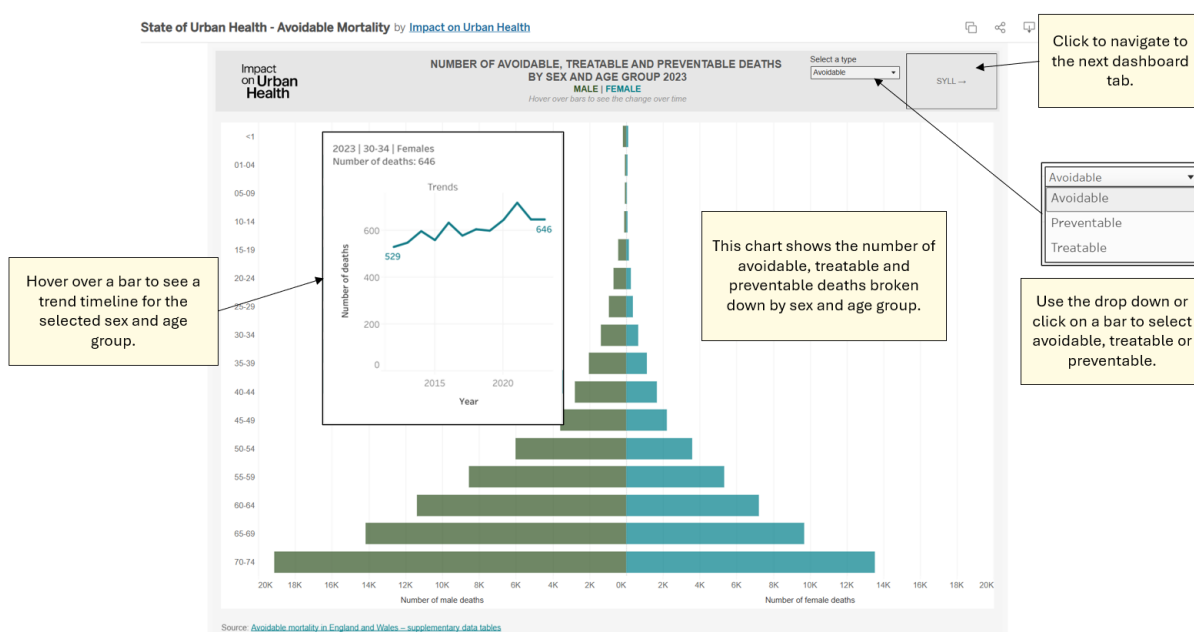
- This dashboard view displays data on SYLL due to causes considered avoidable in England, broken down by **cause** and **sex**.
- The top bar chart shows data for 2023. The bottom-line chart shows trends from 2012 to 2023 by cause.
- Use the drop-down menu on the bottom chart to highlight a cause.
- Hover over a bar or a line to see summary statistics.

Age standardised avoidable, treatable and preventable mortality rates



- This dashboard view displays data on age standardised avoidable, treatable and preventable mortality rates in England, broken down by **sex**.
- The left-hand bar chart shows data for 2023.
- The right-hand line chart shows trends from 2012 to 2023.
- Use the drop-down menu to highlight data for avoidable, treatable or preventable mortality rates.
- Use the ischemic heart disease drop-down menu at the top of the page to include or exclude data on ischemic heart disease from the data displayed.

Number of avoidable, treatable and preventable deaths by sex and age group 2023



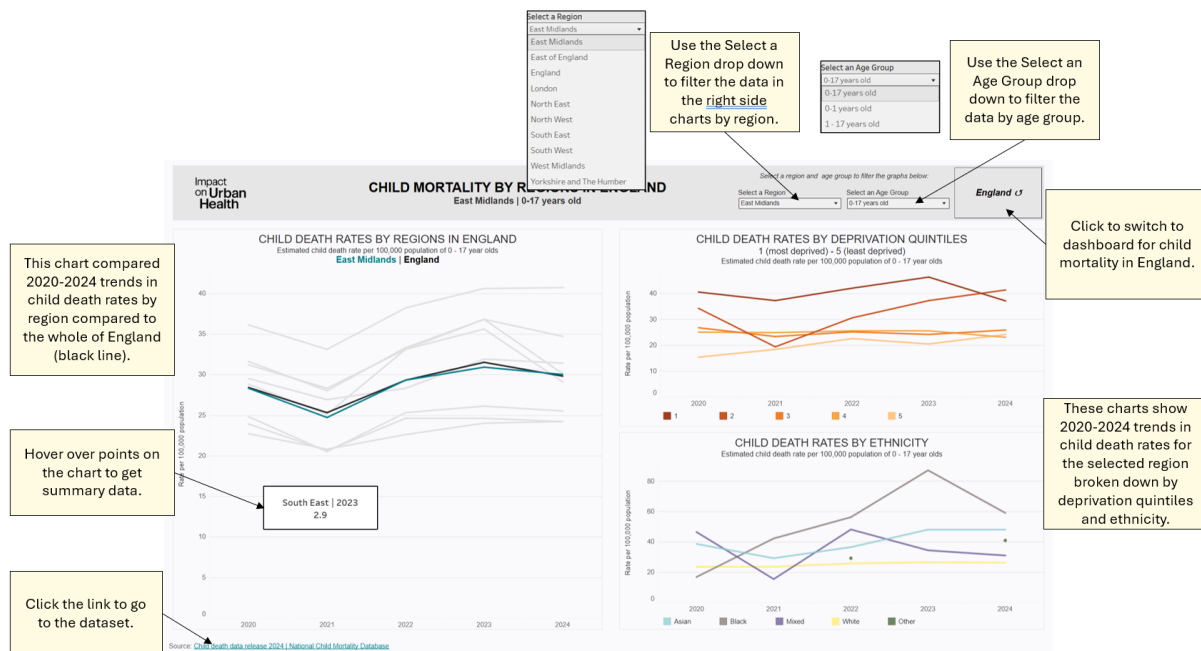
- This dashboard view displays data on avoidable, treatable and preventable deaths in England, broken down by **sex and age group**.
- Hover over a bar to see the trend in deaths for the selected sex and age group, from 2012 to 2023.
- Use the drop-down menu at the top of the page to select between avoidable, preventable and treatable deaths.

[Child mortality in England](#)

This dashboard displays data for child mortality, for children ages 0-17 years, for regions in England from 2020 to 2024. The data is further broken down by gender, age group, deprivation quintiles and ethnicity.

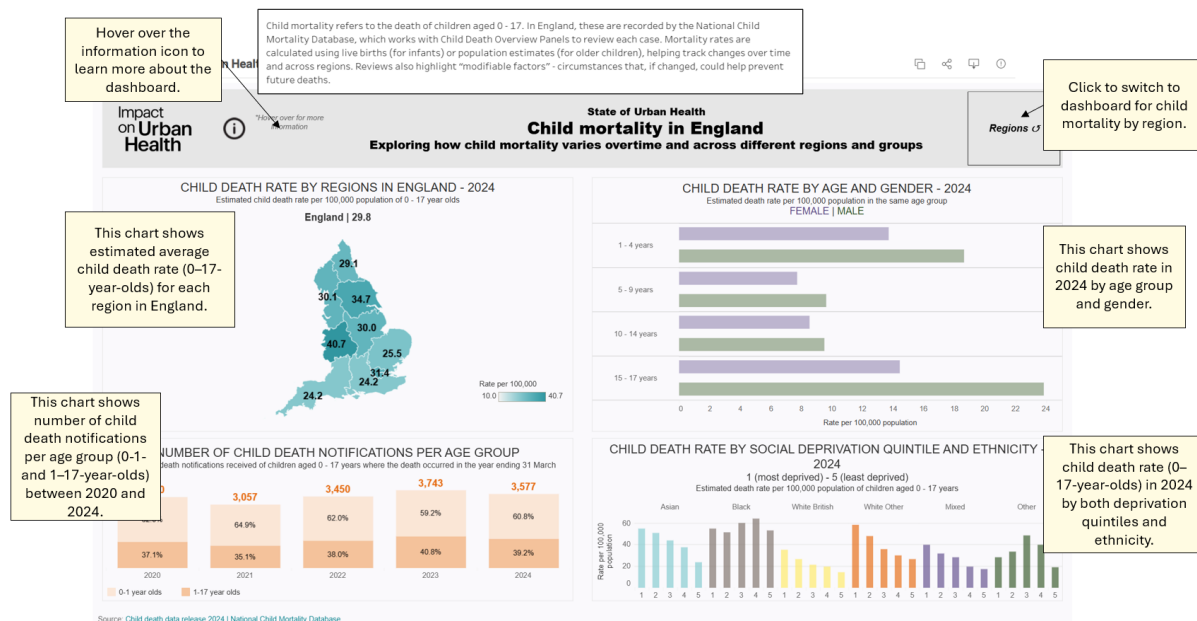
Child mortality refers to the death of children aged 0-17 years old. In England, these are recorded by the [National Child Mortality Database](#), which works with Child Death Overview Panels to review each case. Mortality rates are calculated using live births (for infants) or population estimates (for older children), helping track changes over time and across regions.

Child Mortality by Regions in England



- This dashboard view shows changes for child mortality rates per region in England from 2020 to 2024, broken down by **deprivation quintile** and **ethnicity**.
- Use the *Select a Region* drop-down menu to select a region. Data for the chosen region will be displayed in the right-hand charts.
- Use the *Select an Age Group* drop-down menu to select an age group to filter the data by 0-17, 0-1 and 1-17 years old.
- The left panel shows data for all regions in England. The chosen region is highlighted in pale blue. Data for the whole of England is shown by the black line
- Switch to the child mortality in England dashboard using the button in the top right.

Child Mortality in England



- This dashboard view shows child death rates in England. The top left panel shows average death rates by region in 2024.
- The bottom left panel shows the number of child death notifications in England per age group between 2020 and 2024.
- The charts on the right give child death rates in England for 2024, broken down by age and gender (top right) and by deprivation quintile and ethnicity (bottom right).

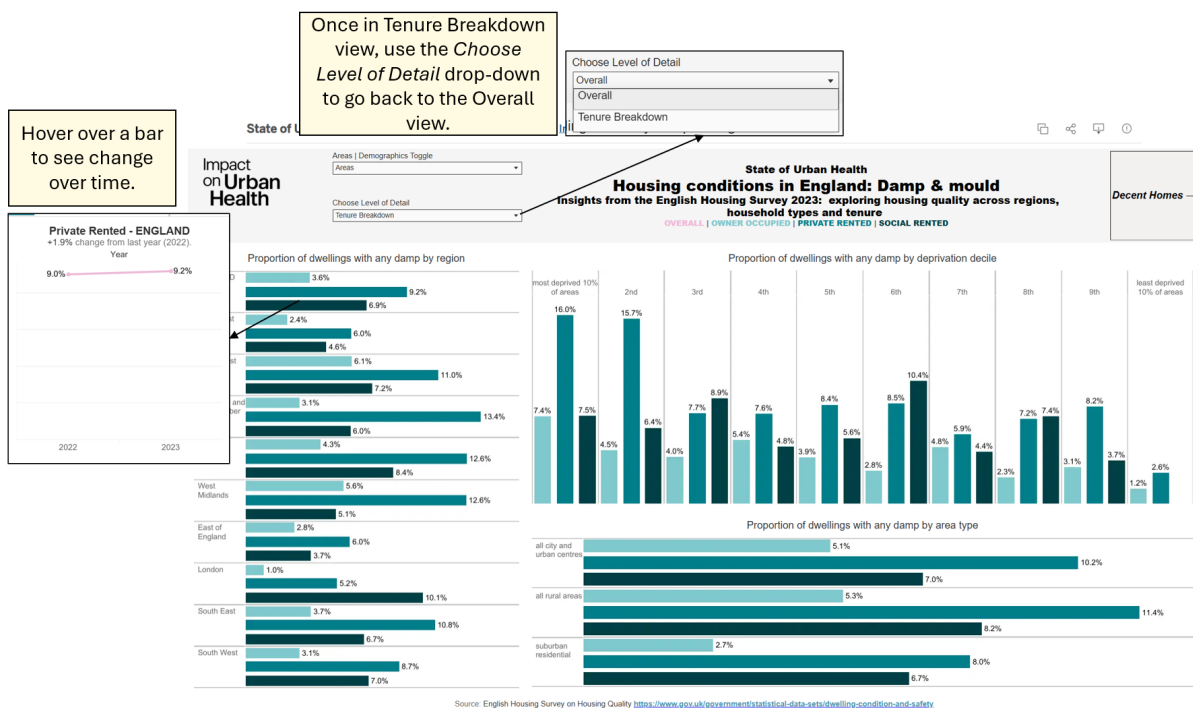
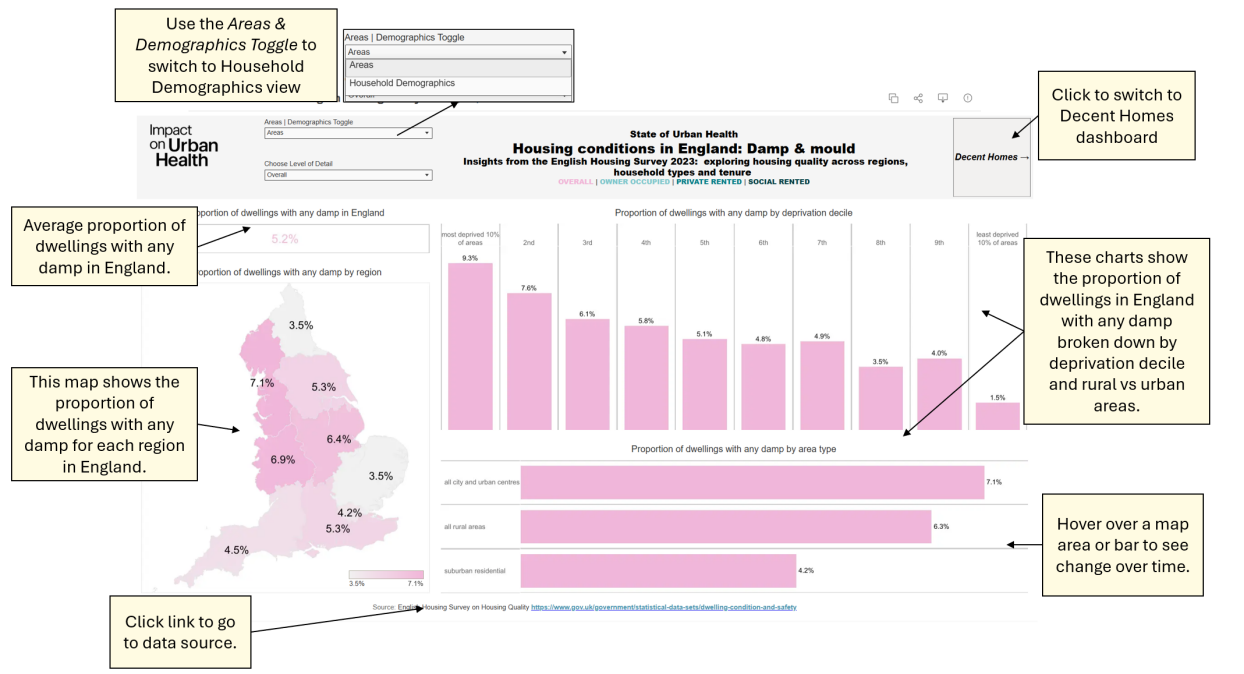
Housing conditions in England: Damp & mould and Decent homes [↗]

This dashboard displays data on damp and mould, and decent homes, in England from the English Housing Survey 2023, broken down by **region**, **deprivation decile** and **rural vs urban areas**.

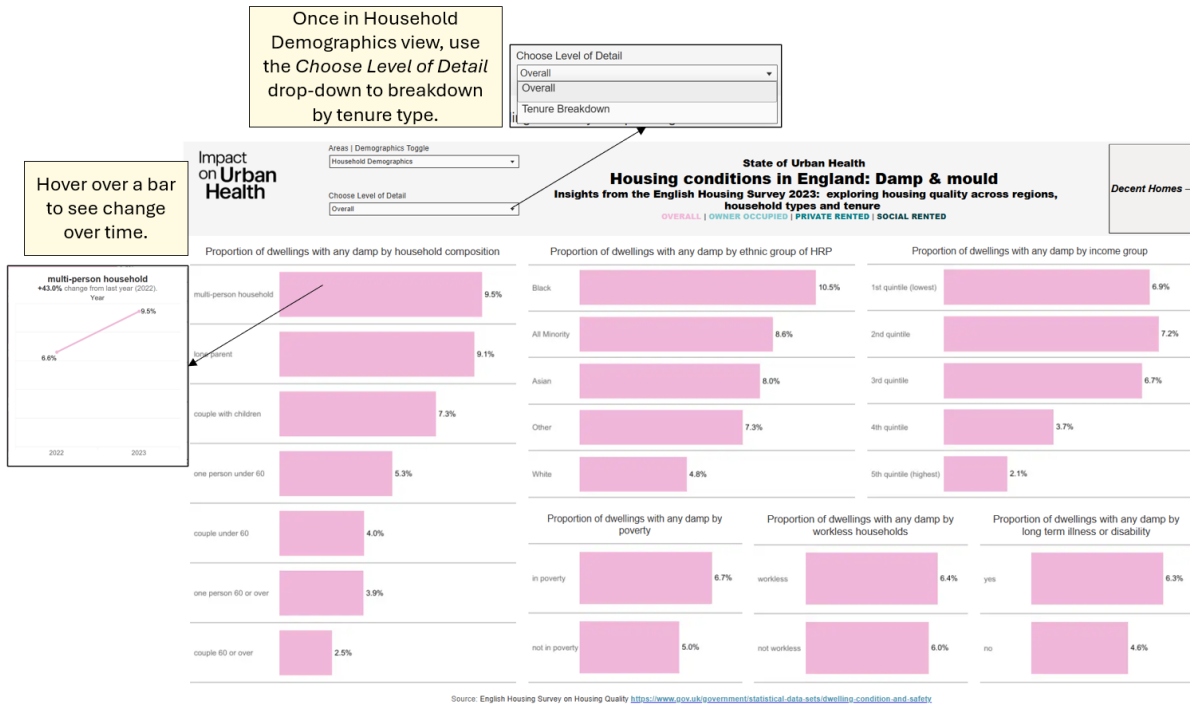
This user guide shows the Damp and Mould dashboard views. The Decent Homes dashboard has an identical set up, therefore this guide is applicable to both.

Damp and Mould 2023 & Decent Homes 2023

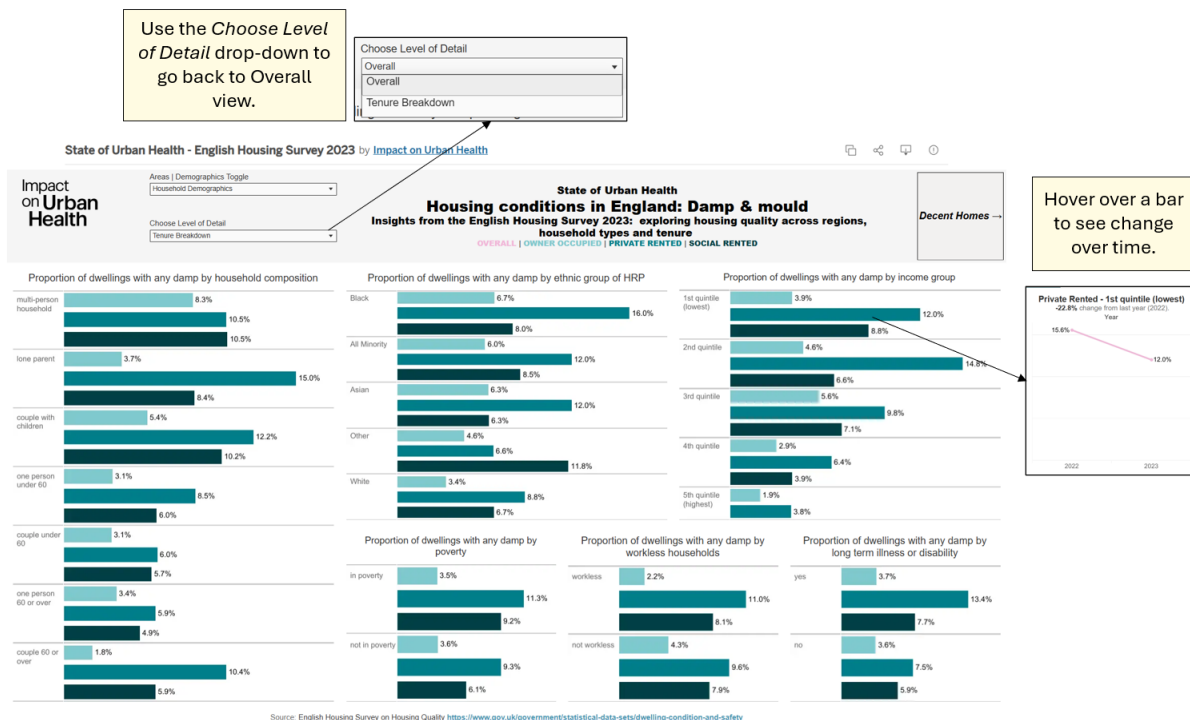
Areas views



- Hover over a region on the map, or a bar in either of the charts to see the change from the previous year.
- Use the Area / Demographics Toggle drop-down menu to switch to the tenure breakdown or household demographics view.



Household Demographics views



- The Household Demographics view breaks down the proportion of dwellings in England with any damp by **household composition**, **ethnic group of HRP** (Household Reference Person), **income group**, whether the household is in **poverty** or not, whether a household is **workless** and whether the household is associated with **long term illness or disability**.
- Hover over any bar to see the change from the previous year.

- Use the *Choose Level of Detail* drop-down menu to see the data broken down by tenure type (owner occupied, private rented or social rented)

Homelessness in England and major urban areas [↗]

This dashboard displays data on homelessness in 2023-2024 for selected urban areas in England. The areas are **England, Birmingham, Lambeth, Leicester, London, Manchester, Southampton and Southwark.**

Demographics of Households view



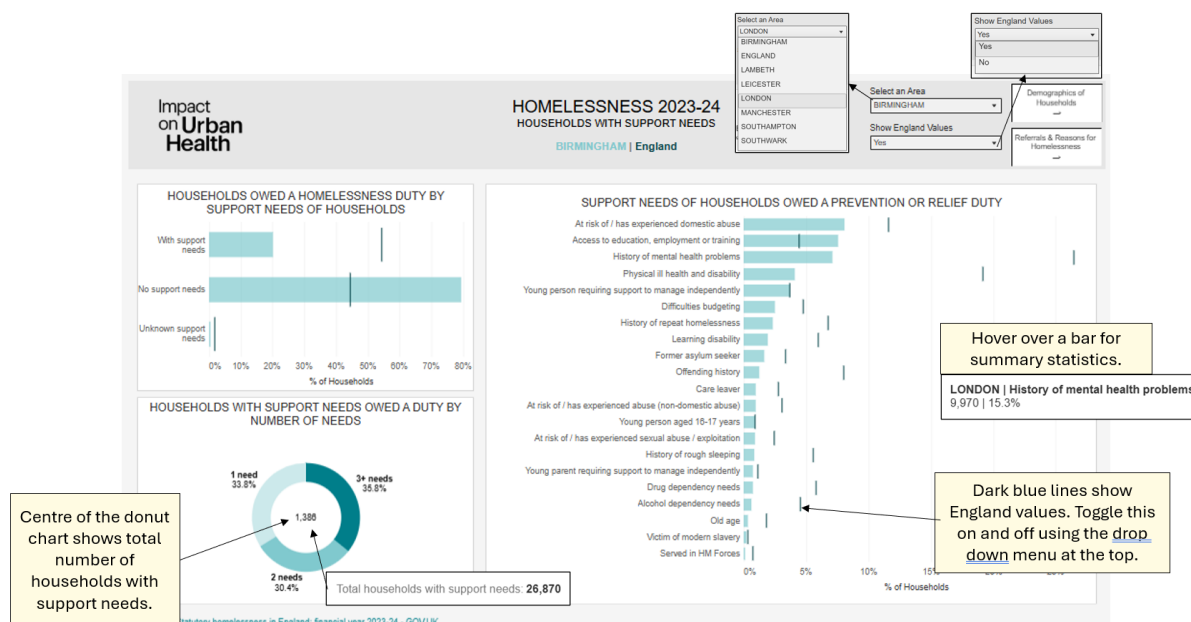
- The *Demographics of Households* view shows data on the demographics of households assessed as owed a duty. Demographics data includes age, ethnicity, employment status and sexual orientation of the lead applicant, and household composition.
- A duty refers to the different types of support authorities can provide to households. This includes prevention duties, which are any activities that can prevent a household becoming homeless, for example, allowing them to remain in their home, or finding alternative accommodation; and relief duty for households who are already homeless, to help them secure accommodation.
- Hover over any bar to see summary statistics.
- Use the *Select an Area* drop-down menu to choose an area you want to filter data for.
- Use the *Show England Values* drop-down to add data for England to the charts.

Referrals and Reasons for Homelessness view



- The *Referrals and Reasons for Homelessness* dashboard view breaks down the reasons for loss of last home, accommodation of people at the time of applying for a homelessness duty and percentage of households referred by different public bodies.
- Hover over any bar to see summary statistics.
- Use the *Select an Area* drop-down menu to choose an area you want to filter data for.
- Use the *Show England Values* drop-down to add data for England to the charts.

Households with Support Needs



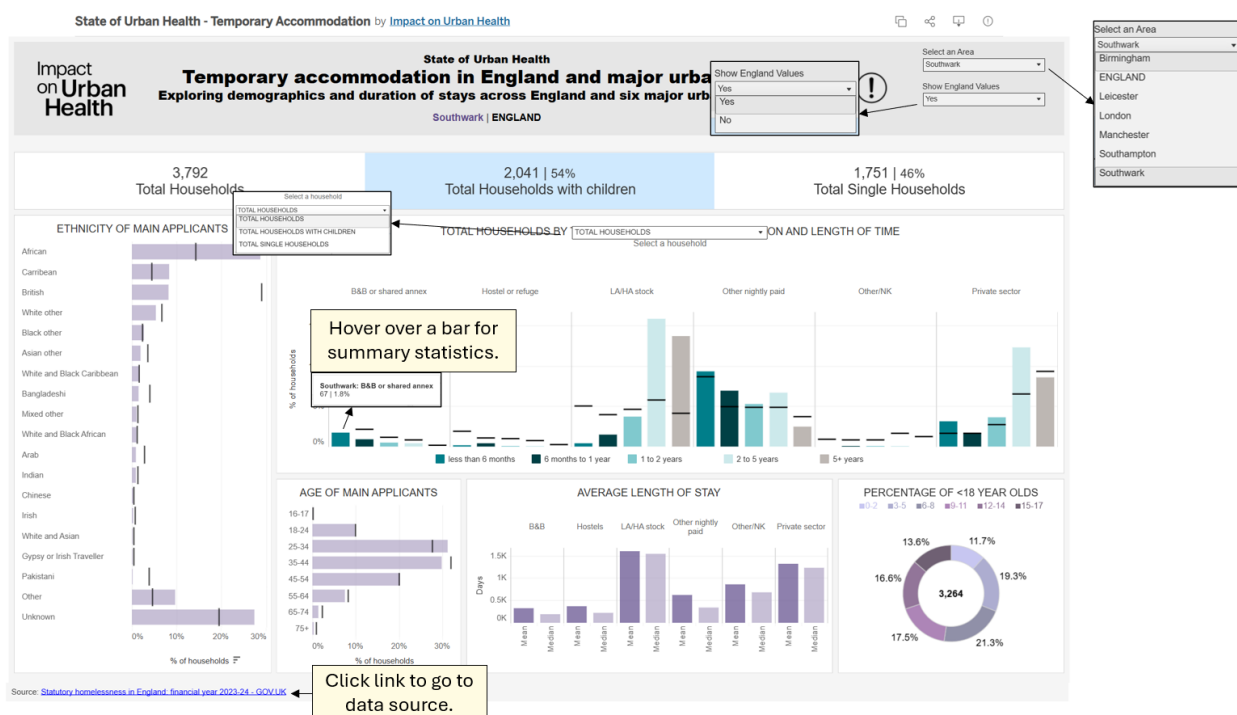
- The *Households with Support Needs* dashboard view breaks down the reasons for loss of last home, accommodation of people at the time of applying for a homelessness duty and percentage of households referred by different public bodies.
- Hover over any bar to see summary statistics.
- Use the *Select an Area* drop-down menu to choose an area you want to filter data for.
- Use the *Show England Values* drop-down to add data for England to the charts.

Temporary accommodation in England and major urban areas



This dashboard displays data on temporary accommodation for 2023-24, including data for England, Birmingham, Leicester, London, Manchester, Southampton and Southwark. Lambeth data is unavailable.

Data is broken down by **ethnicity**, **age**, **type of temporary accommodation** and **length of stay**. England and London data are unavailable for *Average Length of Stay* and *Percentage of <18-year-olds*.



- The top panel shows a summary of the *total households*, *total households with children* and *total single households* for the chosen area.
- Use the *Select an Area* drop-down menu to choose an area you want to filter data for.
- Use the *Show England Values* drop-down to add data for England to the charts.
- The left panel breaks down households in temporary accommodation by **ethnicity**.
- The middle panel breaks the data down by the **type of temporary accommodation**.

- Use the *Select a Household* drop-down menu to choose whether to show total households by type of temporary accommodation and length of time for *total households, total households with children and total single households*.
- The bottom panels break data down by **age of main applicant, average length of stay and percentage of <18-year-olds living in temporary accommodation**.
- Hover over any bar to see summary statistics.